

**NOTE**

1. DIMENSIONS SHOWN IN FT, UNLESS OTHERWISE INDICATED.

**ABR**

W.S.: WATER SERVICE

**PLOT PLAN**  
1:1250

NOTE:

REFERENCE:

REVISION	DESCRIPTION	DREW	DESIGNED	REVIEWED	APPROVED	DATE
0	FOR CONSTRUCTION	D.F.	D.F.	F.D.C.	F.D.C.	08/2024
B	EMITTED FOR APPROBATION	D.F.	D.F.	F.D.C.	F.D.C.	08/2024
A	FOR INTERNAL REVISION	D.F.	D.F.	F.D.C.	F.D.C.	08/2024

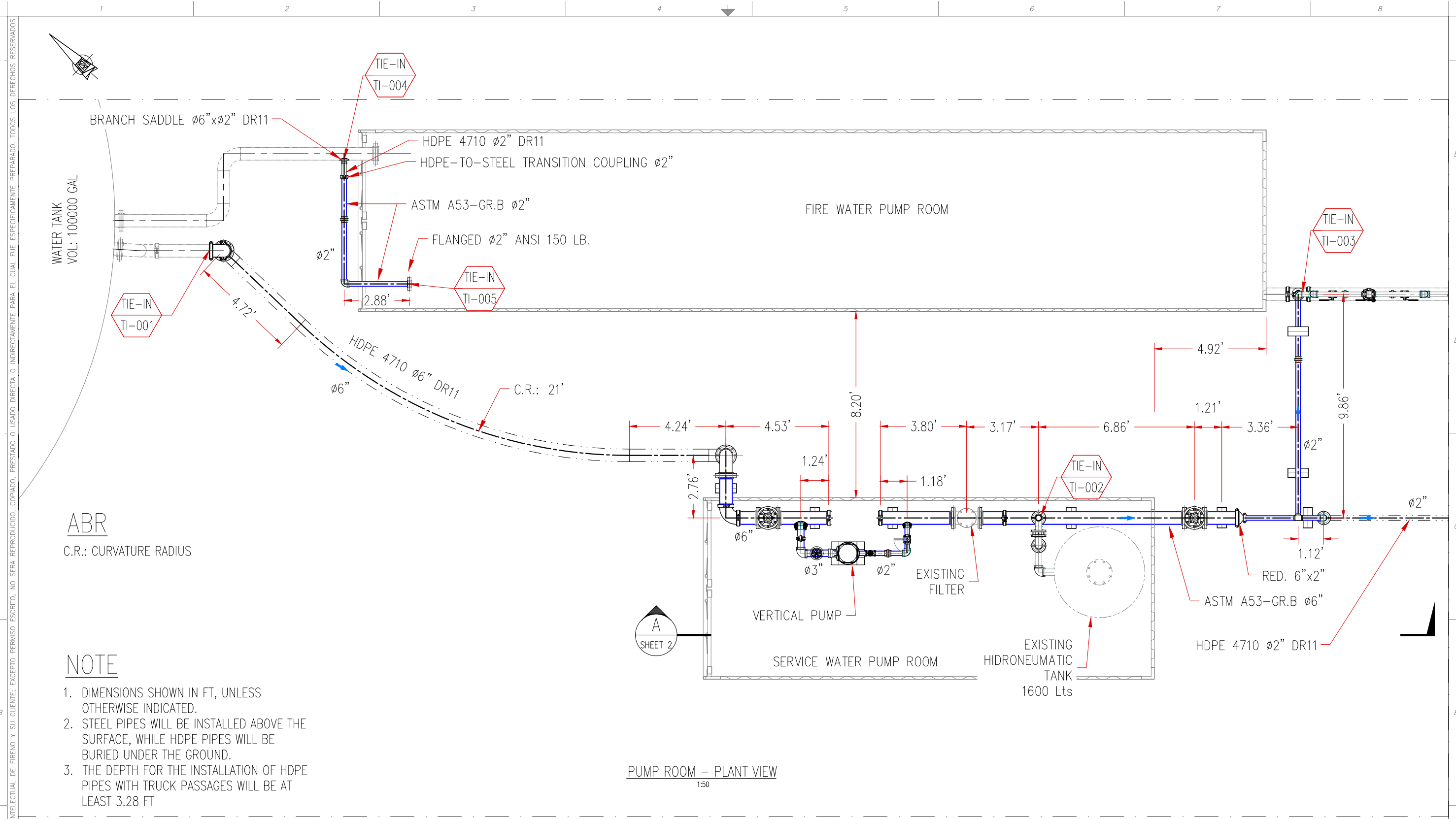


PROYECT: ZIJIN S.A.  
ENGINEERING SERVICES FOR INTEGRATION  
A NEW PUMP SYSTEM AT SARACACCA PLANT

TITLE: DISTRIBUTION OF EQUIPMENT AND  
PIPES FOR INDUSTRIAL SERVICE WATER

DREW BY: D.F.	REVIEWED BY: F.D.C.	FORMAT: A3	FLAT CODE: FRN-ZIJIN-HI-DWG-01
DESIGNED BY: D.F.	APPROVED BY: F.D.C.	DATE: 08/2024	SHEET: 1/6 ESCALE: INDICATED REVISION: 0

ESTE DOCUMENTO ES CONFIDENCIAL Y PROPIEDAD INTELECTUAL DE FIRENO Y SU CLIENTE; EXCEPTO PERMISO ESCRITO, NO SERA REPRODUCIDO, COPIADO, PRESTADO O USADO DIRECTA O INDIRECTAMENTE PARA EL CUAL FUE ESPECIFICAMENTE PREPARADO. TODOS LOS DERECHOS RESERVADOS



ABR  
C.R.: CURVATURE RADIUS

**NOTE**

1. DIMENSIONS SHOWN IN FT, UNLESS OTHERWISE INDICATED.
2. STEEL PIPES WILL BE INSTALLED ABOVE THE SURFACE, WHILE HDPE PIPES WILL BE BURIED UNDER THE GROUND.
3. THE DEPTH FOR THE INSTALLATION OF HDPE PIPES WITH TRUCK PASSAGES WILL BE AT LEAST 3.28 FT

PUMP ROOM - PLANT VIEW  
1:50

NOTE:

REFERENCE:

REVISION	DESCRIPTION	DREW	DESIGNED	REVIEWED	APPROVED	DATE
0	FOR CONSTRUCTION	D.F.	D.F.	F.D.C.	F.D.C.	08/2024
B	EMITTED FOR APPROBATION	D.F.	D.F.	F.D.C.	F.D.C.	08/2024
A	FOR INTERNAL REVISION	D.F.	D.F.	F.D.C.	F.D.C.	08/2024



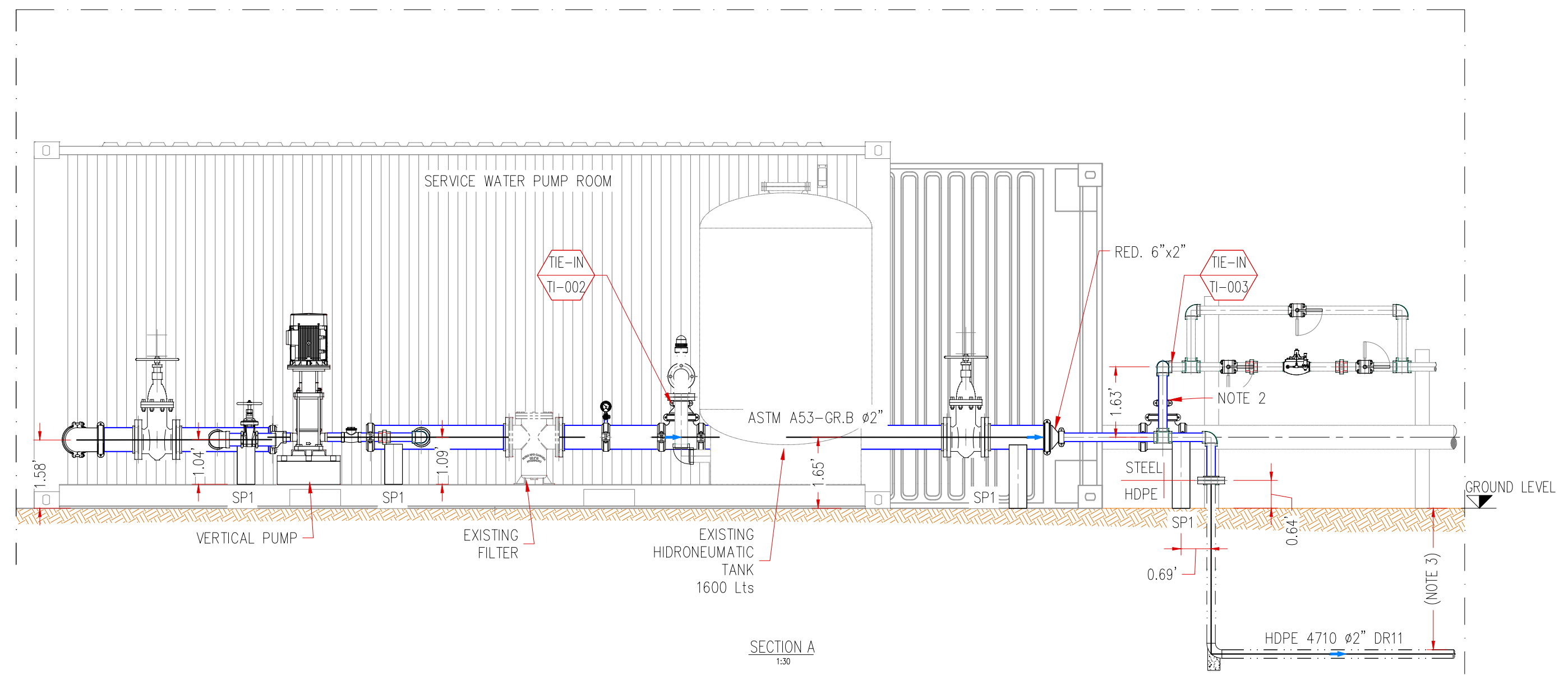
PROJECT: ZIJIN S.A. ENGINEERING SERVICES FOR INTEGRATION A NEW PUMP SYSTEM AT SARACCA PLANT					
TITLE: DISTRIBUTION OF EQUIPMENT AND PIPES FOR INDUSTRIAL SERVICE WATER					
DREW BY: D.F.	REVIEWED BY: F.D.C.	FORMAT: A3	FLAT CODE: FRN-ZIJIN-HI-DWG-01		
DESIGNED BY: D.F.	APPROVED BY: F.D.C.	DATE: 08/2024	SHEET: 2/6	ESCALE: INDICATED	REVISION: 0

ESTE DOCUMENTO ES CONFIDENCIAL Y PROPIEDAD INTELECTUAL DE FIRENO Y SU CLIENTE; EXCEPTO PERMISO ESCRITO, NO SEBA REPRODUCIDO, COPIADO, PRESTADO O USADO DIRECTA O INDIRECTAMENTE PARA EL CUAL FUE ESPECIFICAMENTE PREPARADO. TODOS LOS DERECHOS RESERVADOS

ESTE DOCUMENTO ES CONFIDENCIAL Y PROPIEDAD INTELECTUAL DE FIRENO. NO SEHA REPRODUCIDO, COPIADO, PRESTADO O USADO DIRECTA O INDIRECTAMENTE PARA EL CUAL FUE ESPECIFICAMENTE PREPARADO. TODOS LOS DERECHOS RESERVADOS

### NOTE

1. DIMENSIONS SHOWN IN FT, UNLESS OTHERWISE INDICATED.
2. SECTION TO BE REPLACED WITH A 2" END CAP GROOVED.
3. THE DEPTH FOR THE INSTALLATION OF HDPE PIPES WITH TRUCK PASSAGES WILL BE AT LEAST 3.28 FT
4. STEEL PIPES WILL BE INSTALLED ABOVE THE SURFACE, WHILE HDPE PIPES WILL BE BURIED UNDER THE GROUND



NOTE:

REVISION	DESCRIPTION	DREW	DESIGNED	REVIEWED	APPROVED	DATE
0	FOR CONSTRUCTION	D.F.	D.F.	F.D.C.	F.D.C.	08/24
B	EMITTED FOR APPROBATION	D.F.	D.F.	F.D.C.	F.D.C.	08/24
A	FOR INTERNAL REVISION	D.F.	D.F.	F.D.C.	F.D.C.	08/24

REFERENCE:

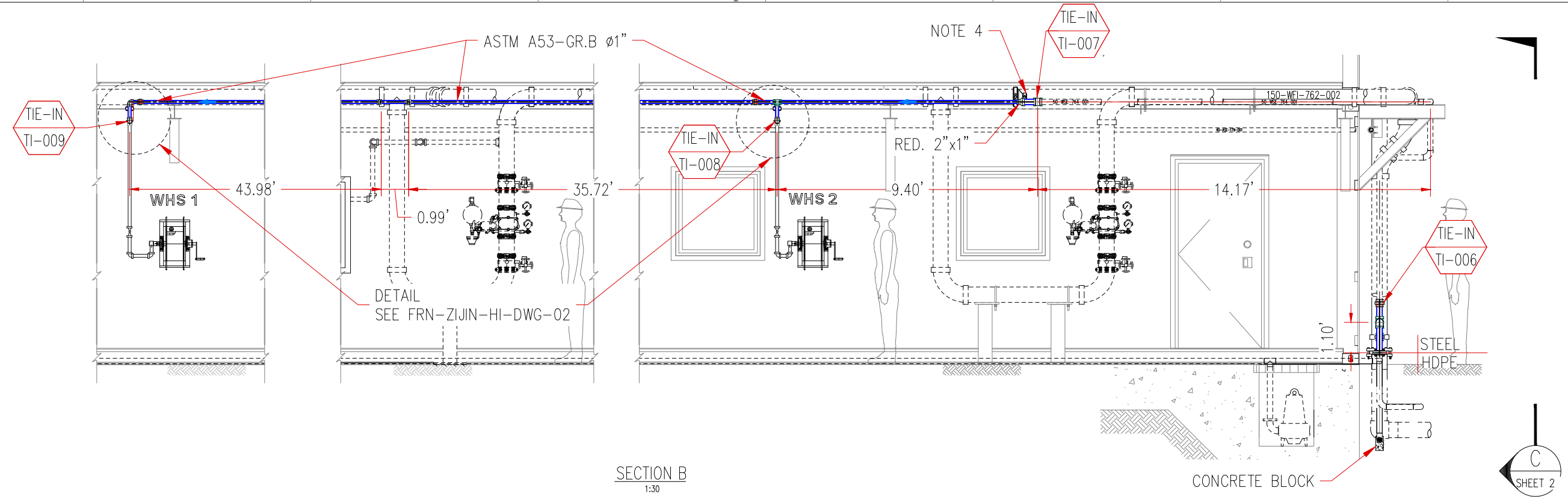


PROYECT: ZIJIN S.A.  
ENGINEERING SERVICES FOR INTEGRATION  
A NEW PUMP SYSTEM AT SARAMACCA PLANT

TITLE: DISTRIBUTION OF EQUIPMENT AND  
PIPES FOR INDUSTRIAL SERVICE WATER

DREW BY: D.F.	REVIEWED BY: F.D.C.	FORMAT: A3	FLAT CODE: FRN-ZIJIN-HI-DWG-01
DESIGNED BY: D.F.	APPROVED BY: F.D.C.	DATE: 08/2024	SHEET: 3/6 ESCALE: INDICATED REVISION: 0

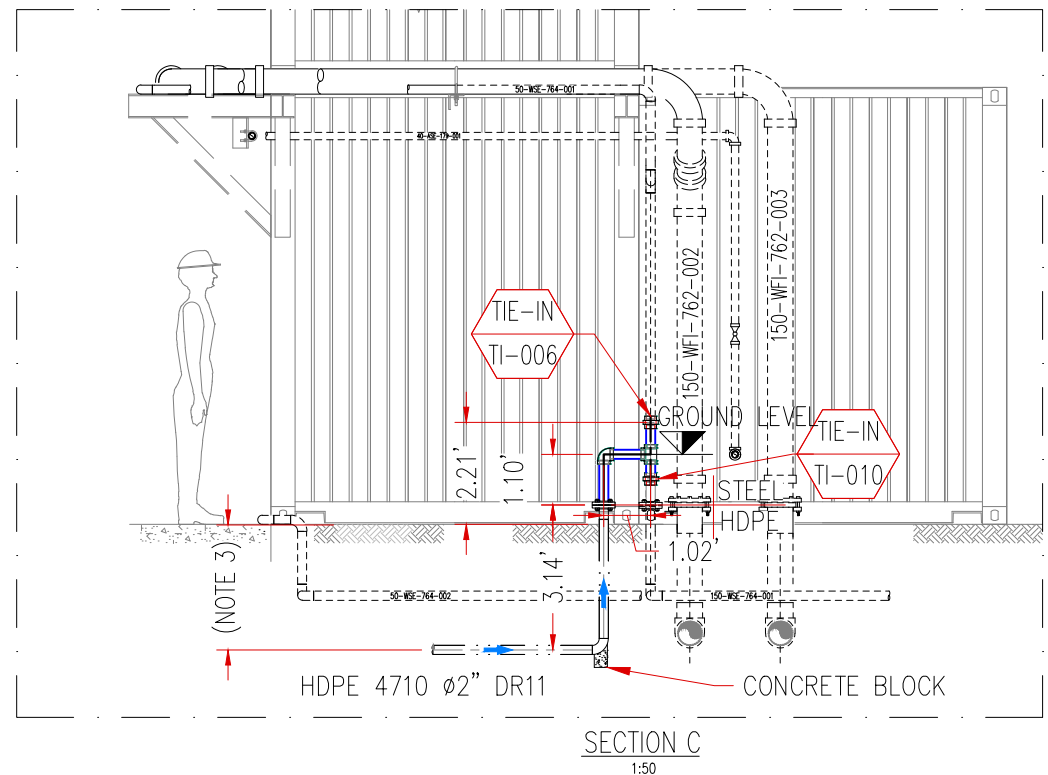
ESTE DOCUMENTO ES CONFIDENCIAL Y PROPIEDAD INTELECTUAL DE FIRENO Y SU CLIENTE; EXCEPTO PERMISO ESCRITO, NO SERA REPRODUCIDO, COPIADO, PRESTADO O USADO DIRECTA O INDIRECTAMENTE PARA EL CUAL FUE ESPECIFICAMENTE PREPARADO. TODOS LOS DERECHOS RESERVADOS



SECTION B  
1:30

**NOTE**

1. DIMENSIONS SHOWN IN FT, UNLESS OTHERWISE INDICATED.
2. STEEL PIPES WILL BE INSTALLED ABOVE THE SURFACE, WHILE HDPE PIPES WILL BE BURIED UNDER THE GROUND.
3. THE DEPTH FOR THE INSTALLATION OF HDPE PIPES WITH TRUCK PASSAGES WILL BE AT LEAST 3.28 FT
4. SECTION TO BE REPLACED WITH A 2" END CAP GROOVED.



SECTION C  
1:50

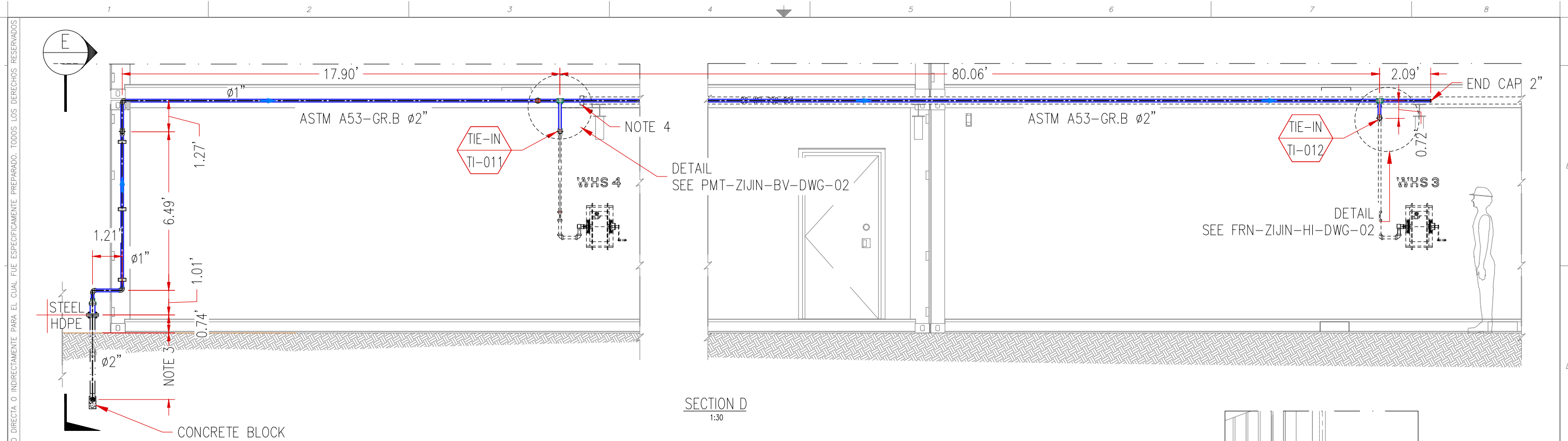
NOTE:

REVISION	DESCRIPTION	DREW	DESIGNED	REVIEWED	APPROVED	DATE
0	FOR CONSTRUCTION	D.F.	D.F.	F.D.C.	F.D.C.	08/2024
B	EMITTED FOR APPROBATION	D.F.	D.F.	F.D.C.	F.D.C.	08/2024
A	FOR INTERNAL REVISION	D.F.	D.F.	F.D.C.	F.D.C.	08/2024

REFERENCE:

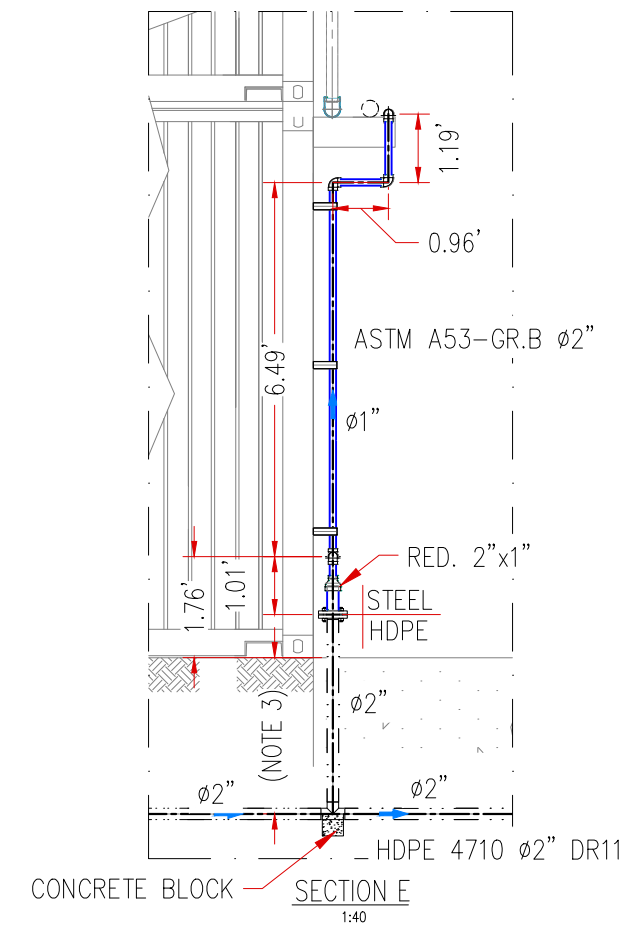


PROJECT: ZIJIN S.A. ENGINEERING SERVICES FOR INTEGRATION A NEW PUMP SYSTEM AT SARACCA PLANT					
TITLE: DISTRIBUTION OF EQUIPMENT AND PIPES FOR INDUSTRIAL SERVICE WATER					
DREW BY: D.F.	REVIEWED BY: F.D.C.	FORMAT: A3	FLAT CODE: FRN-ZIJIN-HI-DWG-01		
DESIGNED BY: D.F.	APPROVED BY: F.D.C.	DATE: 08/2024	SHEET: 4/6	ESCALE: INDICATED	REVISION: 0



**NOTE**

1. DIMENSIONS SHOWN IN FT, UNLESS OTHERWISE INDICATED.
2. STEEL PIPES WILL BE INSTALLED ABOVE THE SURFACE, WHILE HDPE PIPES WILL BE BURIED UNDER THE GROUND.
3. THE DEPTH FOR THE INSTALLATION OF HDPE PIPES WITH TRUCK PASSAGES WILL BE AT LEAST 3.28 FT
4. SECTION TO BE REPLACED WITH A 3" END CAP GROOVED.



NOTE:

REVISION	DESCRIPTION	DREW	DESIGNED	REVIEWED	APPROVED	DATE
0	FOR CONSTRUCTION	D.F.	D.F.	F.D.C.	F.D.C.	08/2024
B	EMITTED FOR APPROBATION	D.F.	D.F.	F.D.C.	F.D.C.	08/2024
A	FOR INTERNAL REVISION	D.F.	D.F.	F.D.C.	F.D.C.	08/2024

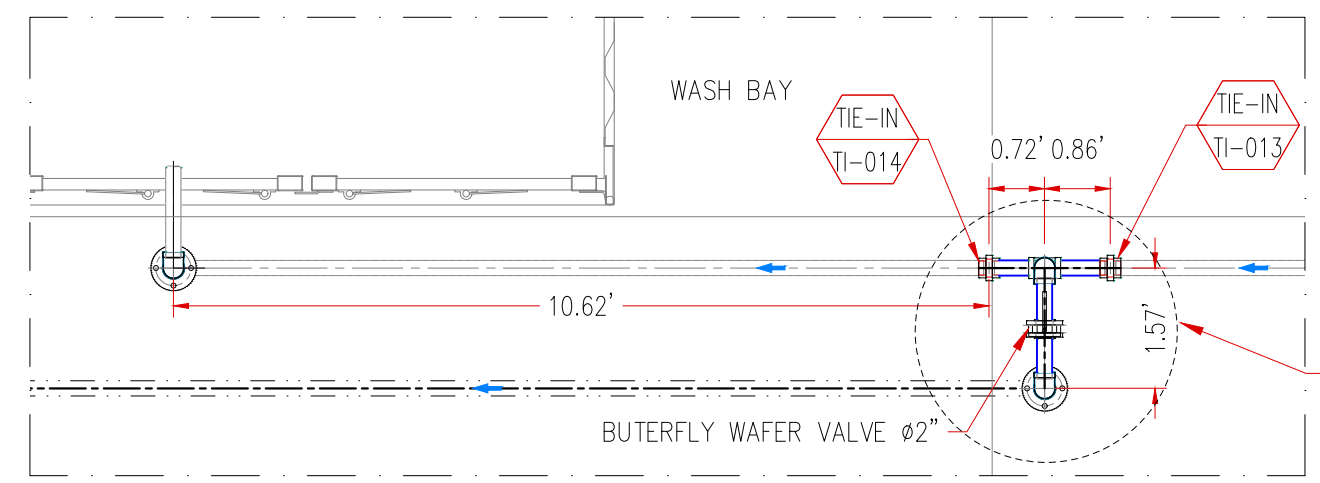
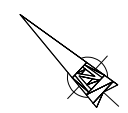
REFERENCE:



PROJECT: ZIJIN S.A. ENGINEERING SERVICES FOR INTEGRATION A NEW PUMP SYSTEM AT SARACACCA PLANT					
TITLE: DISTRIBUTION OF EQUIPMENT AND PIPES FOR INDUSTRIAL SERVICE WATER					
DREW BY: D.F.	REVIEWED BY: F.D.C.	FORMAT: A3	FLAT CODE: FRN-ZIJIN-HI-DWG-01		
DESIGNED BY: D.F.	APPROVED BY: F.D.C.	DATE: 08/2024	SHEET: 5/6	ESCALE: INDICATED	REVISION: 0

ESTE DOCUMENTO ES CONFIDENCIAL Y PROPIEDAD INTELECTUAL DE FIRENO Y SU CLIENTE; EXCEPTO PERMISO ESCRITO, NO SEBA REPRODUCIDO, COPIADO, PRESTADO O USADO DIRECTA O INDIRECTAMENTE PARA EL CUAL FUE ESPECIFICAMENTE PREPARADO. TODOS LOS DERECHOS RESERVADOS

ESTE DOCUMENTO ES CONFIDENCIAL Y PROPIEDAD INTELECTUAL DE FIRENO Y SU CLIENTE; EXCEPTO PERMISO ESCRITO, NO SERA REPRODUCIDO, COPIADO, PRESTADO O USADO DIRECTA O INDIRECTAMENTE PARA EL CUAL FUE ESPECIFICAMENTE PREPARADO. TODOS LOS DERECHOS RESERVADOS

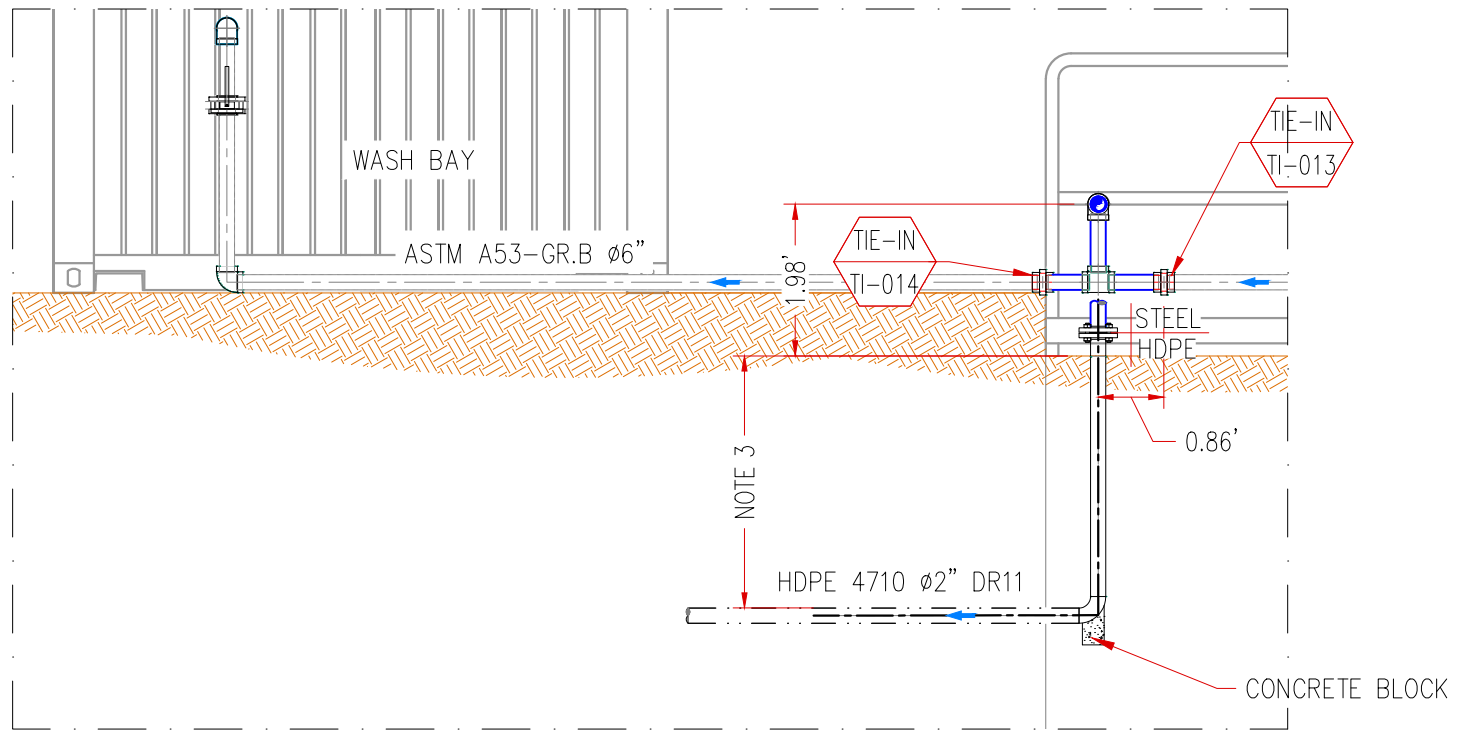


WASH BAY – INTERCONNECTION – PLANT VIEW  
1:30

DETAIL  
SEE FRN-ZIJIN-HI-DWG-02

**NOTE**

1. DIMENSIONS SHOWN IN FT, UNLESS OTHERWISE INDICATED.
2. STEEL PIPES WILL BE INSTALLED ABOVE THE SURFACE, WHILE HDPE PIPES WILL BE BURIED UNDER THE GROUND.
3. THE DEPTH FOR THE INSTALLATION OF HDPE PIPES WITH TRUCK PASSAGES WILL BE AT LEAST 3.28 FT.
6. BOTH PIPES AND METAL ACCESSORIES SHOULD BE PROTECTED WITH EPOXY COATING.
4. THE DIMENSIONS SHOWN ARE REFERENTIAL, THEY MUST BE VERIFIED IN THE FIELD.



WASH BAY – INTERCONNECTION – FRONTAL VIEW  
1:30

NOTE:

REVISION	DESCRIPTION	DREW	DESIGNED	REVIEWED	APPROVED	DATE
0	FOR CONSTRUCTION	D.F.	D.F.	F.D.C.	F.D.C.	08/2024
B	EMITTED FOR APPROBATION	D.F.	D.F.	F.D.C.	F.D.C.	08/2024
A	FOR INTERNAL REVISION	D.F.	D.F.	F.D.C.	F.D.C.	08/2024

REFERENCE:



PROYECT: ZIJIN S.A.  
ENGINEERING SERVICES FOR INTEGRATION  
A NEW PUMP SYSTEM AT SARAMACCA PLANT

TITLE: DISTRIBUTION OF EQUIPMENT AND  
PIPES FOR INDUSTRIAL SERVICE WATER

DREW BY: D.F.	REVIEWED BY: F.D.C.	FORMAT: A3	FLAT CODE: FRN-ZIJIN-HI-DWG-01
DESIGNED BY: D.F.	APPROVED BY: F.D.C.	DATE: 08/2024	SHEET: 6/6 ESCALE: INDICATED REVISION: 0