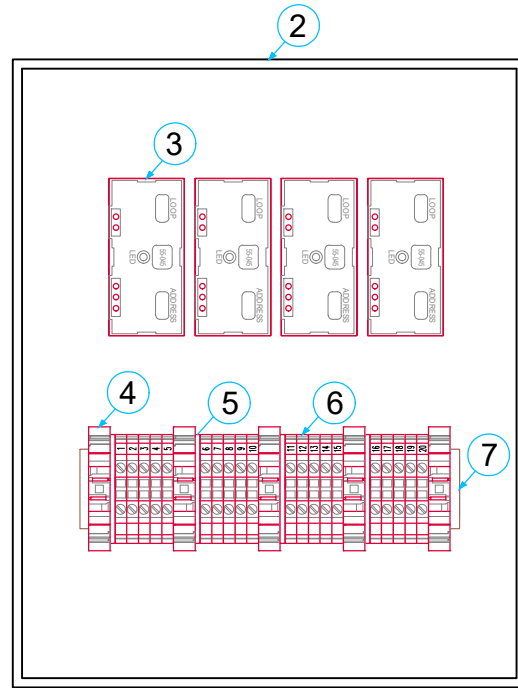
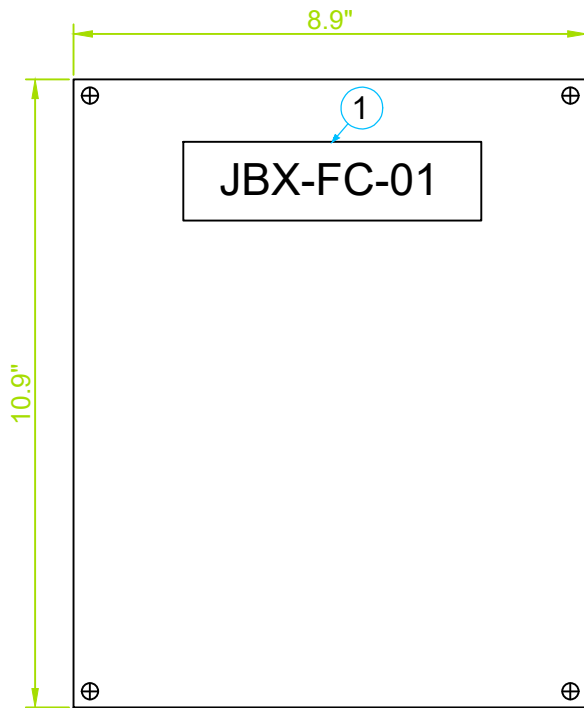


JUNCTION BOX JBX-FC-01



LEYEND		
ITEM	QUANTITY	DESCRIPTION
1	1	PANEL LABEL
2	1	PANEL-SIZE 10.9 * 8.9 FOR ENCLOSURE P/N PJU12106L HAMMOND
3	4	MINI MONITOR MODULE P/N 55-045 FIKE
4	5	E/UK - End bracket P/N 1201442 Phoenix Contact
5	4	D-UT 2,5/10 - End cover P/N 3047028 Phoenix Contact
6	20	Terminal block 0.14 mm ² - 4 mm ² P/N 3044076 Phoenix Contact
7	1	DIN RAIL

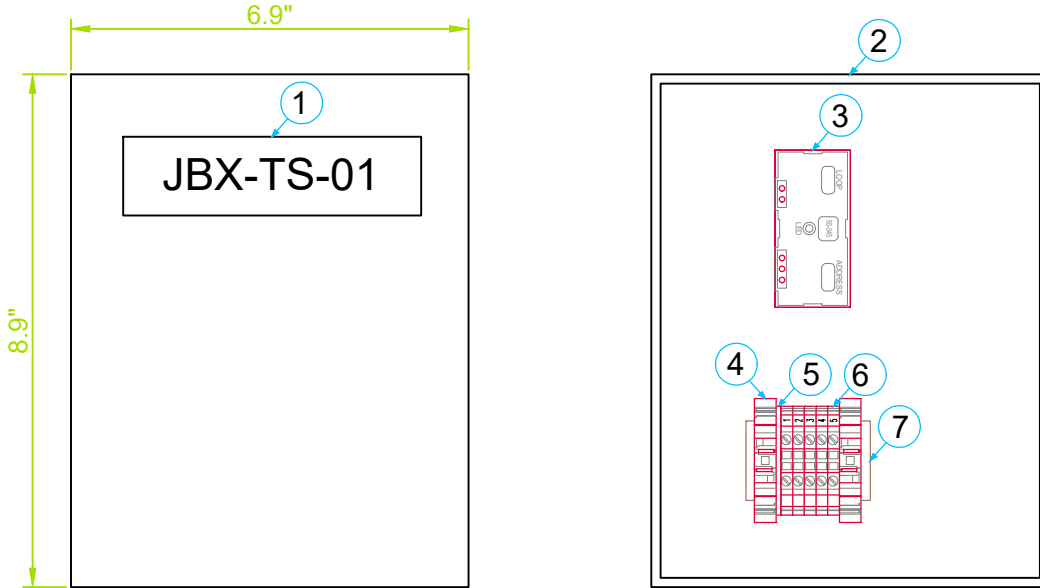
THIS DOCUMENT IS THE INTELLECTUAL PROPERTY OF FIRENO S.A.S AND ZIJIN - ROSEBEL GOLD MINES

REV.	DESCRIPTION	DATE
B	FOR APPROVAL	
A	INTERNAL REVIEW	08-24
REVISIONS		



PROJECT:					
ZIJIN - ROSEBEL GOLD MINES ENGINEERING SERVICES FOR INTEGRATION OF BUTTERFLY VALVES AT SARAMACCA PLANT					
TITLE:					
FRONT VIEW JUNCTION BOX JBX-FC-01 IN FIRE CONTAINER					
DRAWING:	REVIEWED:	FORMAT:	DRAWING NUMBER:		
F.R.C.	J.P.	A4	FRN-ZIJIN-BV-DWG-03		
DESIGNED:	APPROVED:	DATE:	SHEET:	SCALE:	REVISION:
F.D.L.	J.M.	08-24	1 of 7	S/E	A

JUNCTION BOX JBX-TS-01



LEYEND

ITEM	QUANTITY	DESCRIPTION
1	1	PANEL LABEL
2	1	PANEL-SIZE 8.9 * 6.9 FOR ENCLOSURE P/N 14R0907 HAMMOND
3	1	MINI MONITOR MODULE P/N 55-045 FIKE
4	2	E/UK - End bracket P/N 1201442 Phoenix Contact
5	1	D-UT 2,5/10 - End cover P/N 3047028 Phoenix Contact
6	5	Terminal block 0.14 mm ² - 4 mm ² P/N 3044076 Phoenix Contact
7	1	DIN RAIL

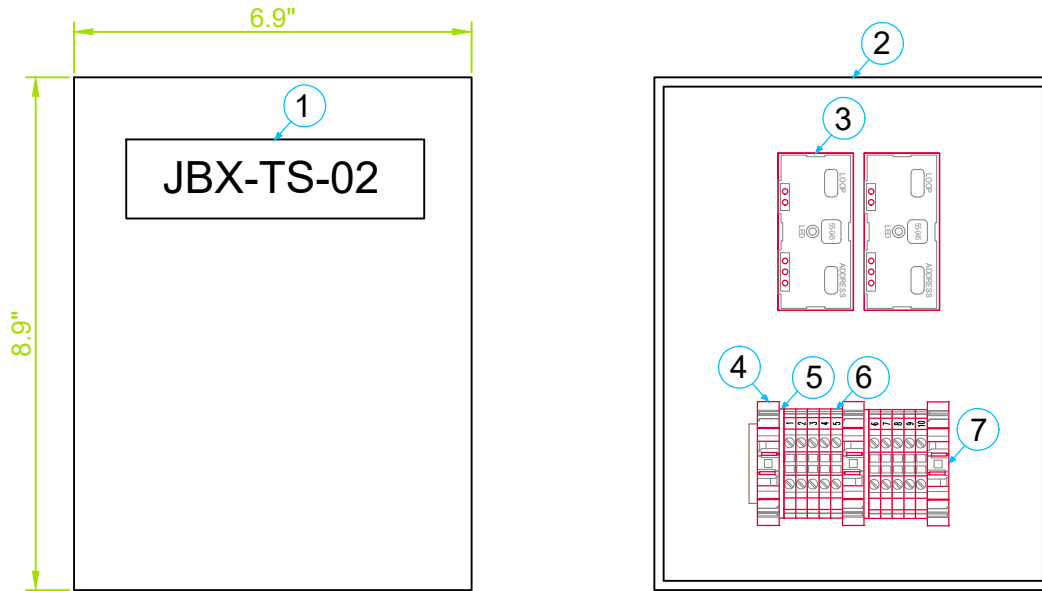
THIS DOCUMENT IS THE INTELLECTUAL PROPERTY OF FIRENO S.A.S AND ZIJIN - ROSEBEL GOLD MINES



PROJECT:		ZIJIN - ROSEBEL GOLD MINES ENGINEERING SERVICES FOR INTEGRATION OF BUTTERFLY VALVES AT SARAMACCA PLANT			
TITLE:		FRONT VIEW JUNCTION BOX JBX-TS-01 IN TRUCK SHOP			
DRAWING:	REVIEWED:	FORMAT:	DRAWING NUMBER:		
F.R.C.	J.P.	A4	FRN-ZIJIN-BV-DWG-03		
DESIGNED:	APPROVED:	DATE:	SHEET:	SCALE:	REVISION:
F.D.L.	J.M.	08-24	3 of 7	S/E	A

REV.	DESCRIPTION	DATE
B	FOR APPROVAL	
A	INTERNAL REVIEW	08-24
REVISIONS		

JUNCTION BOX JBX-TS-02



LEYEND

ITEM	QUANTITY	DESCRIPTION
1	1	PANEL LABEL
2	1	PANEL-SIZE 8,9 * 6,9 FOR ENCLOSURE P/N 14R0907 HAMMOND
3	2	MINI MONITOR MODULE P/N 55-045 FIKE
4	3	E/UK - End bracket P/N 1201442 Phoenix Contact
5	1	D-UT 2,5/10 - End cover P/N 3047028 Phoenix Contact
6	10	Terminal block 0.14 mm2 - 4 mm2 P/N 3044076 Phoenix Contact
7	1	DIN RAIL

THIS DOCUMENT IS THE INTELLECTUAL PROPERTY OF FIRENO S.A.S AND ZIJIN - ROSEBEL GOLD MINES

REV.	DESCRIPTION	DATE
B	FOR APPROVAL	
A	INTERNAL REVIEW	08-24
REVISIONS		

PROJECT:

ZIJIN - ROSEBEL GOLD MINES
ENGINEERING SERVICES FOR INTEGRATION
OF BUTTERFLY VALVES AT SARAMACCA PLANT

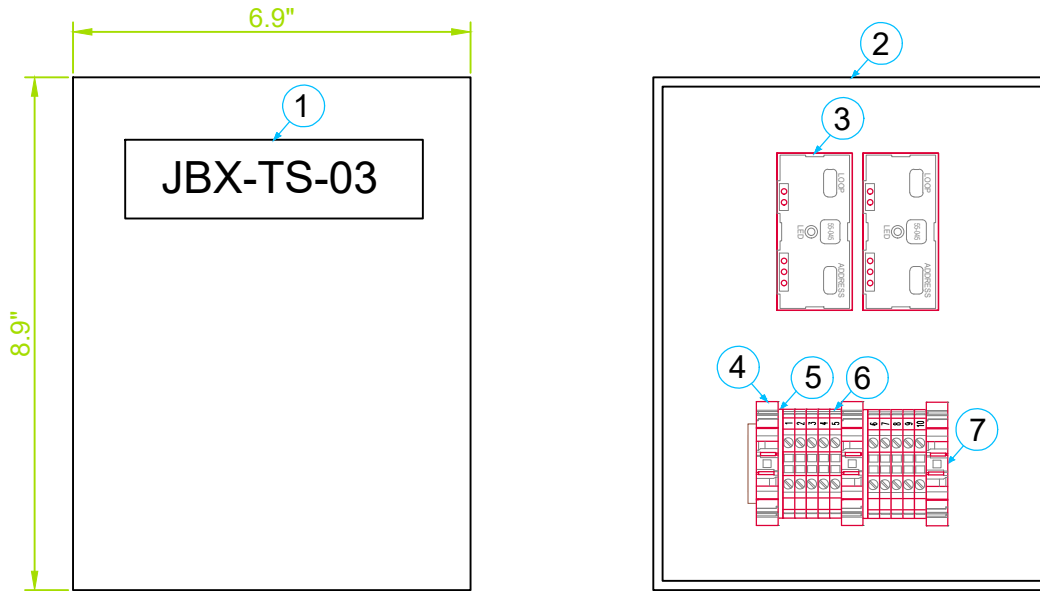
TITLE:

FRONT VIEW JUNCTION BOX
JBX-TS-02 IN TRUCK SHOP

DRAWING:	REVIEWED:	FORMAT:	DRAWING NUMBER:
F.R.C.	J.P.	A4	FRN-ZIJIN-BV-DWG-03
DESIGNED:	APPROVED:	DATE:	SHEET:
F.D.L.	J.M.	08-24	4 of 7
		SCALE:	REVISION:
		S/E	A

DRAWING:		REVIEWED:		FORMAT:		DRAWING NUMBER:	
F.R.C.		J.P.		A4		FRN-ZIJIN-BV-DWG-03	
DESIGNED:		APPROVED:		DATE:		SHEET:	
F.D.L.		J.M.		08-24		4 of 7	
				SCALE:		REVISION:	
				S/E		A	


JUNCTION BOX JBX-TS-03



LEYEND

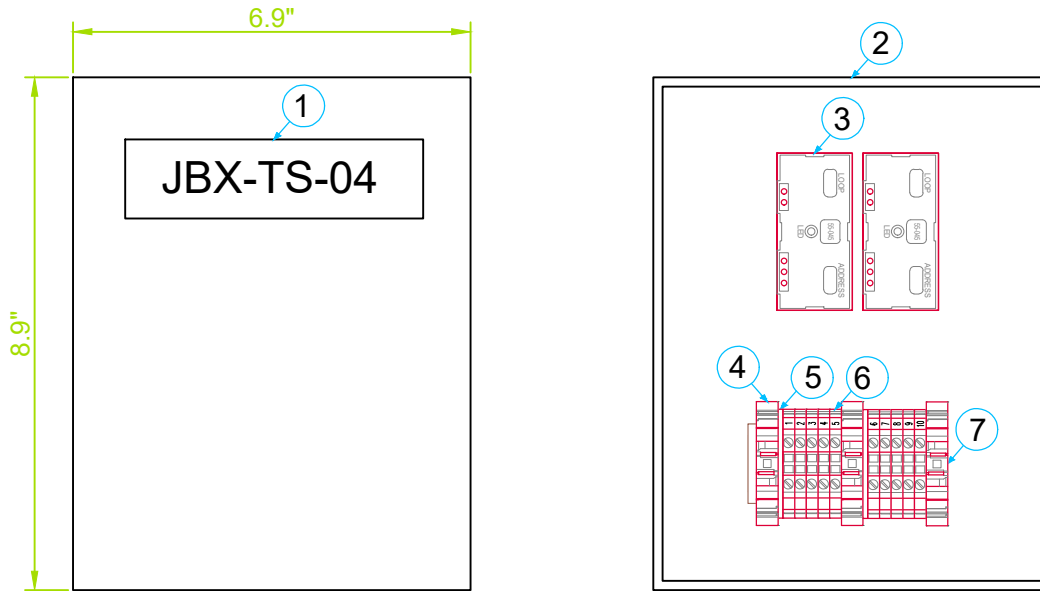
ITEM	QUANTITY	DESCRIPTION
1	1	PANEL LABEL
2	1	PANEL-SIZE 8.9 * 6.9 FOR ENCLOSURE P/N 14R0907 HAMMOND
3	2	MINI MONITOR MODULE P/N 55-045 FIKE
4	3	E/UK - End bracket P/N 1201442 Phoenix Contact
5	2	D-UT 2,5/10 - End cover P/N 3047028 Phoenix Contact
6	10	Terminal block 0.14 mm ² - 4 mm ² P/N 3044076 Phoenix Contact
7	1	DIN RAIL

THIS DOCUMENT IS THE INTELLECTUAL PROPERTY OF FIRENO S.A.S AND ZIJIN - ROSEBEL GOLD MINES

		PROJECT: ZIJIN - ROSEBEL GOLD MINES ENGINEERING SERVICES FOR INTEGRATION OF BUTTERFLY VALVES AT SARAMACCA PLANT						
		TITLE: FRONT VIEW JUNCTION BOX JBX-TS-03 IN TRUCK SHOP						
REV.	DESCRIPTION	DATE	DRAWING: F.R.C.	REVIEWED: J.P.	FORMAT: A4	DRAWING NUMBER: FRN-ZIJIN-BV-DWG-03		
REVISIONS			DESIGNED: F.D.L.	APPROVED: J.M.	DATE: 08-24	SHEET: 5 of 7	SCALE: S/E	REVISION: A




JUNCTION BOX JBX-TS-04



LEYEND

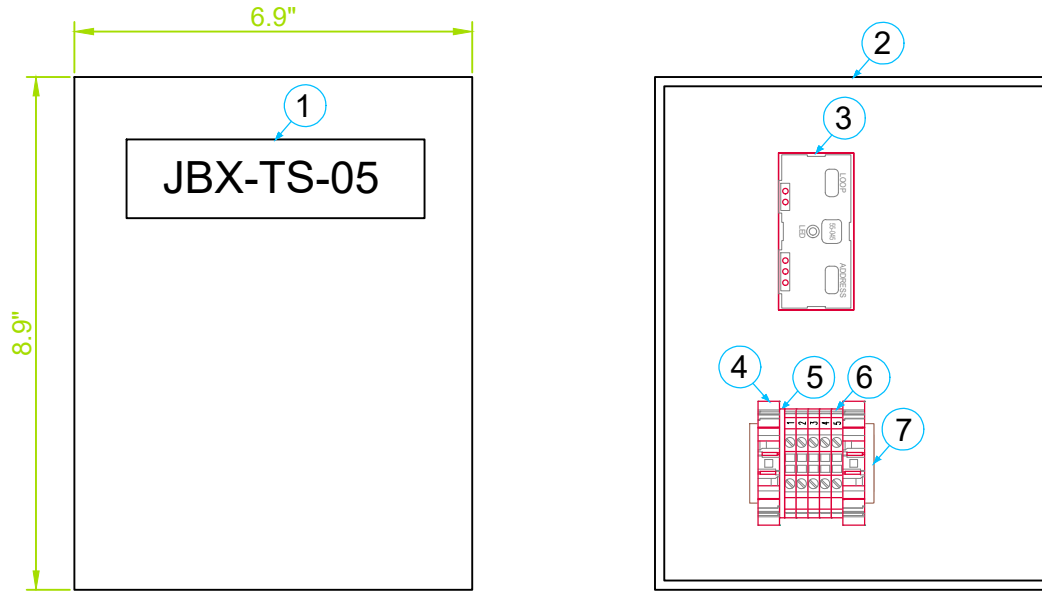
ITEM	QUANTITY	DESCRIPTION
1	1	PANEL LABEL
2	1	PANEL-SIZE 8.9 * 6.9 FOR ENCLOSURE P/N 14R0907 HAMMOND
3	2	MINI MONITOR MODULE P/N 55-045 FIKE
4	3	E/UK - End bracket P/N 1201442 Phoenix Contact
5	2	D-UT 2,5/10 - End cover P/N 3047028 Phoenix Contact
6	10	Terminal block 0.14 mm ² - 4 mm ² P/N 3044076 Phoenix Contact
7	1	DIN RAIL

THIS DOCUMENT IS THE INTELLECTUAL PROPERTY OF FIRENO S.A.S AND ZIJIN - ROSEBEL GOLD MINES

		PROJECT: ZIJIN - ROSEBEL GOLD MINES ENGINEERING SERVICES FOR INTEGRATION OF BUTTERFLY VALVES AT SARAMACCA PLANT						
		TITLE: FRONT VIEW JUNCTION BOX JBX-TS-04 IN TRUCK SHOP						
B	FOR APPROVAL		DRAWING:	REVIEWED:	FORMAT:	DRAWING NUMBER:		
A	INTERNAL REVIEW	08-24	F.R.C.	J.P.	A4	FRN-ZIJIN-BV-DWG-03		
REV.	DESCRIPTION	DATE	DESIGNED:	APPROVED:	DATE:	SHEET:	SCALE:	REVISION:
REVISIONS			F.D.L.	J.M.	08-24	6 of 7	S/E	A



JUNCTION BOX JBX-TS-05



LEYEND

ITEM	QUANTITY	DESCRIPTION
1	1	PANEL LABEL
2	1	PANEL-SIZE 8.9 * 6.9 FOR ENCLOSURE P/N 14R0907 HAMMOND
3	1	MINI MONITOR MODULE P/N 55-045 FIKE
4	2	E/UK - End bracket P/N 1201442 Phoenix Contact
5	1	D-UT 2,5/10 - End cover P/N 3047028 Phoenix Contact
6	5	Terminal block 0.14 mm ² - 4 mm ² P/N 3044076 Phoenix Contact
7	1	DIN RAIL

THIS DOCUMENT IS THE INTELLECTUAL PROPERTY OF FIRENO S.A.S AND ZIJIN - ROSEBEL GOLD MINES



PROJECT: ZIJIN - ROSEBEL GOLD MINES
ENGINEERING SERVICES FOR INTEGRATION
OF BUTTERFLY VALVES AT SARAMACCA PLANT

TITLE: FRONT VIEW JUNCTION BOX
JBX-TS-05 IN TRUCK SHOP

REV.	DESCRIPTION	DATE
B	FOR APPROVAL	
A	INTERNAL REVIEW	08-24
REVISIONS		

DRAWING: F.R.C.	REVIEWED: J.P.	FORMAT: A4	DRAWING NUMBER: FRN-ZIJIN-BV-DWG-03		
DESIGNED: F.D.L.	APPROVED: J.M.	DATE: 08-24	SHEET: 7 of 7	SCALE: S/E	REVISION: A