

SCOPE OF WORK

FABRICATE AND INSTALL THE CONCRETE FOUNDATIONS OF CIC PLANT AT TSF3

1. BACKGROUND INFORMATION

In 2018 a CIC (Carbon in Column) plant was built and set up at tailing discharge TSF2 (Tailing Storage Facility) at the distance of approximately 10 km from the Mill to recover the gold from tailing water. By the end of 2024 the discharge will be removed to TSF3 which will result in lower water level where recovery will not be possible.

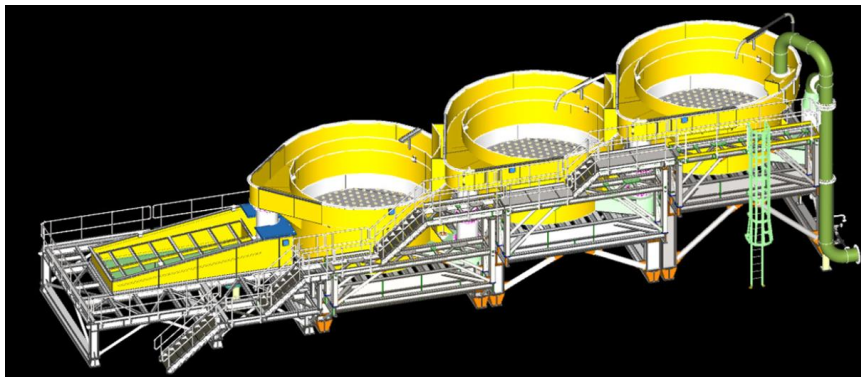


Fig1. CIC plant

RGM plans to dismantle the complete CIC plant at TSF2 and relocate this to TSF3 to recover gold, which will comprise installation of a new foundation and construction of the plant at the new location.

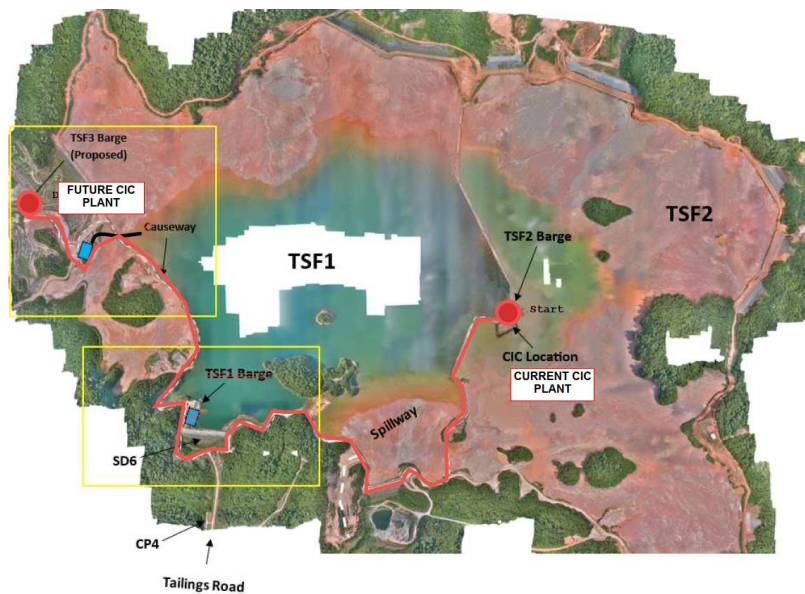


Fig 2. Road map current CIC and future CIC.

2. SCOPE OF WORKS

RGM is seeking the assistance of a building or construction company to fabricate and install the concrete foundation as per attached construction drawings and reference technical specs but not limited to the following main scope:

- Survey and levelling work.
- Fabricate of the footings.
- Forming, pouring and installing the footings.

Even though RGM will make the best effort to ensure all relevant information are available to the contractor, it is part of the contractor's responsibility to ensure, prior to the start of the job to:

- Review the construction drawings for installation.
- Review and verification of technical requirements.
- Review the laydown and work area.

2.1. Risks

There are construction and installation risks associated with the execution. A risk register and JHAs will be initiated and implemented in collaboration with the contractor upon RGM-HSE approval.

2.2. Responsible Department

Mill Crusher Project team is responsible for the project management on behalf of RGM. Contact persons: Dominique Casingena (Project Manager) and Robert Dijo (Project Engineer) will oversee this project execution and will be the primary RGM vocal point of contact.

2.3. Facilities to be provided by RGM

- RGM will mainly provide and arrange site access, accommodation and food.

2.4. Facilities to be provided by the Contractor

- Required equipment and material.
- Personnel (familiar within RGM and ready to be deployed) and PPE
- Note: RGM might rent the equipment from the contractor or source it from third party or within RGM's internal pool of equipment and have it available for the contractor.

2.5. Monitoring & evaluation

- Monitoring and evaluation during execution will be based on the Scope, Schedule, Safety, Quality and Cost of the installation.
- It is expected for the construction company to complete the installation **within four weeks** following the placement of the Purchase Order.

3. SCHEDULE

A schedule will be developed in MS Project through collaboration between the contractor and RGM responsible personnel.

4. BUDGET ESTIMATE & CONTRACT TYPE

The budget is to be established based on the estimates provided by the contractor.

5. REFERENCE DRAWINGS

1. Construction drawing and floor plans CIC washer foundation.
2. Technical specification (as a reference)